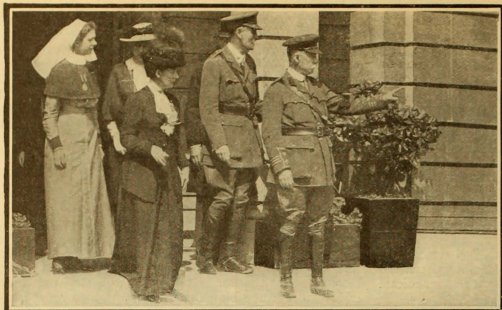


# A Queen

*Few may dictate to nobility. Yet David W. Griffith told the Dowager Queen Alexandra and court ladies how to act before the camera. They were quite submissive too.*



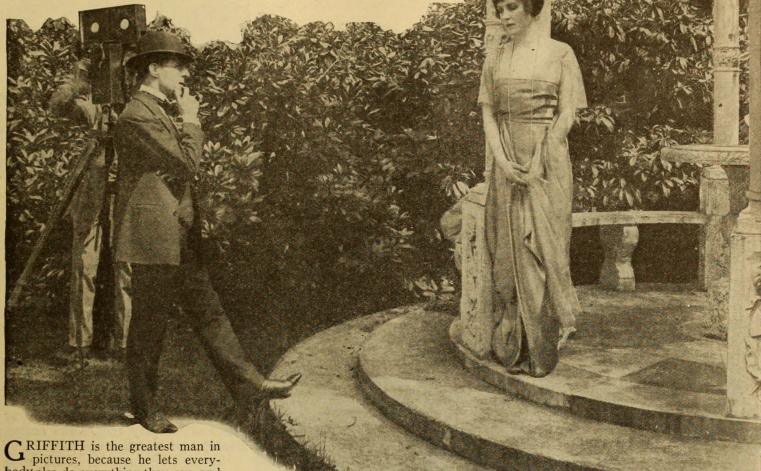
The Dowager Queen Alexandra as she appears in a scene of Mr. Griffith's first Artcraft picture, "The Great Love."



Mr. Griffith instructing Lily Elsie how to play an important scene.

# His Star

With customary partiality to the art before him, Griffith forgot that his actress was Lady Diana Manners, the celebrated English beauty. She was, for the moment, so much "material"—to be moulded into a Griffith actress.



**G**RIFFITH is the greatest man in pictures, because he lets everybody else do everything they can, and then goes them one better. "Masks and Faces" was produced in England, and it had almost all the stage and screen notables of Great Britain in the cast. What does Griffith do? The most beautiful women of the exclusive court circles act in his picture, "The Great Love." This is the picture recently referred to in *PHOTOPLAY*, in which Griffith will show the regeneration of British society through its war activities.



A group of English noblewomen as they appear in the picture. At left is Lily Elsie. Then appears Lady Diana Manners and at extreme right Mrs. John Lavery.



An unusual tableau showing Bettina Stuart-Wortley scrubbing the floor. It's a hospital scene.