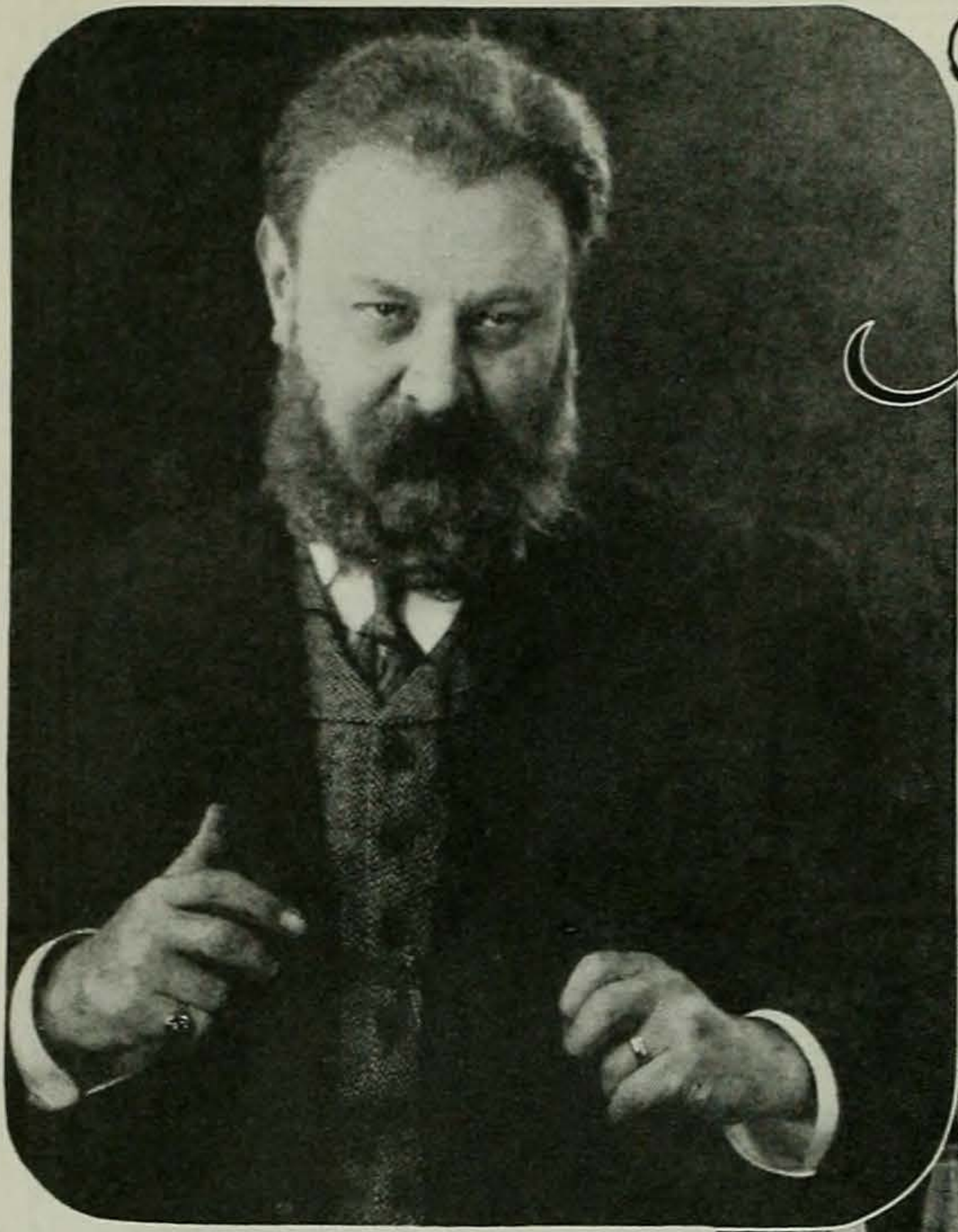
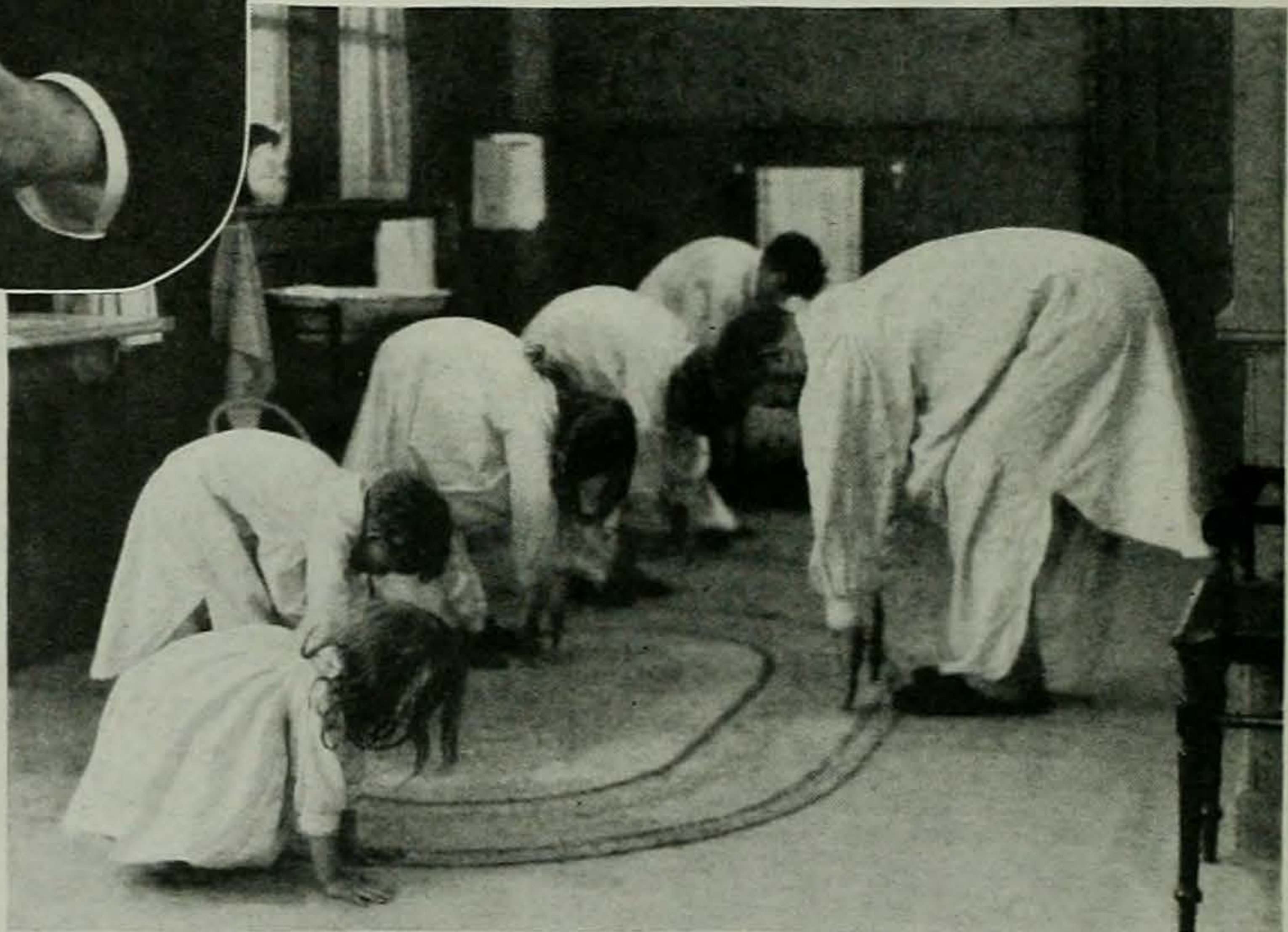


# Making Milwaukee Famous ~ Again



Introducing a citizen of Milwaukee—Emil Jannings in his first American picture—"The Way of All Flesh," a story of a German-American

Jannings selected Belle Bennett to play the role of the patient and loving *frau*. Hers is a life devoted to *kuchen*, *kirchen* and *kinder*!



Poppa and the *kinder* keep up the old customs of the Vaterland. Vas you efer in Cincinnati, St. Louis or Milwaukee, you'll recognize the strict realism of this little scene



Here is a picture of the life of the German immigrant, with its industry, its stern religion and its deep family sentiment

